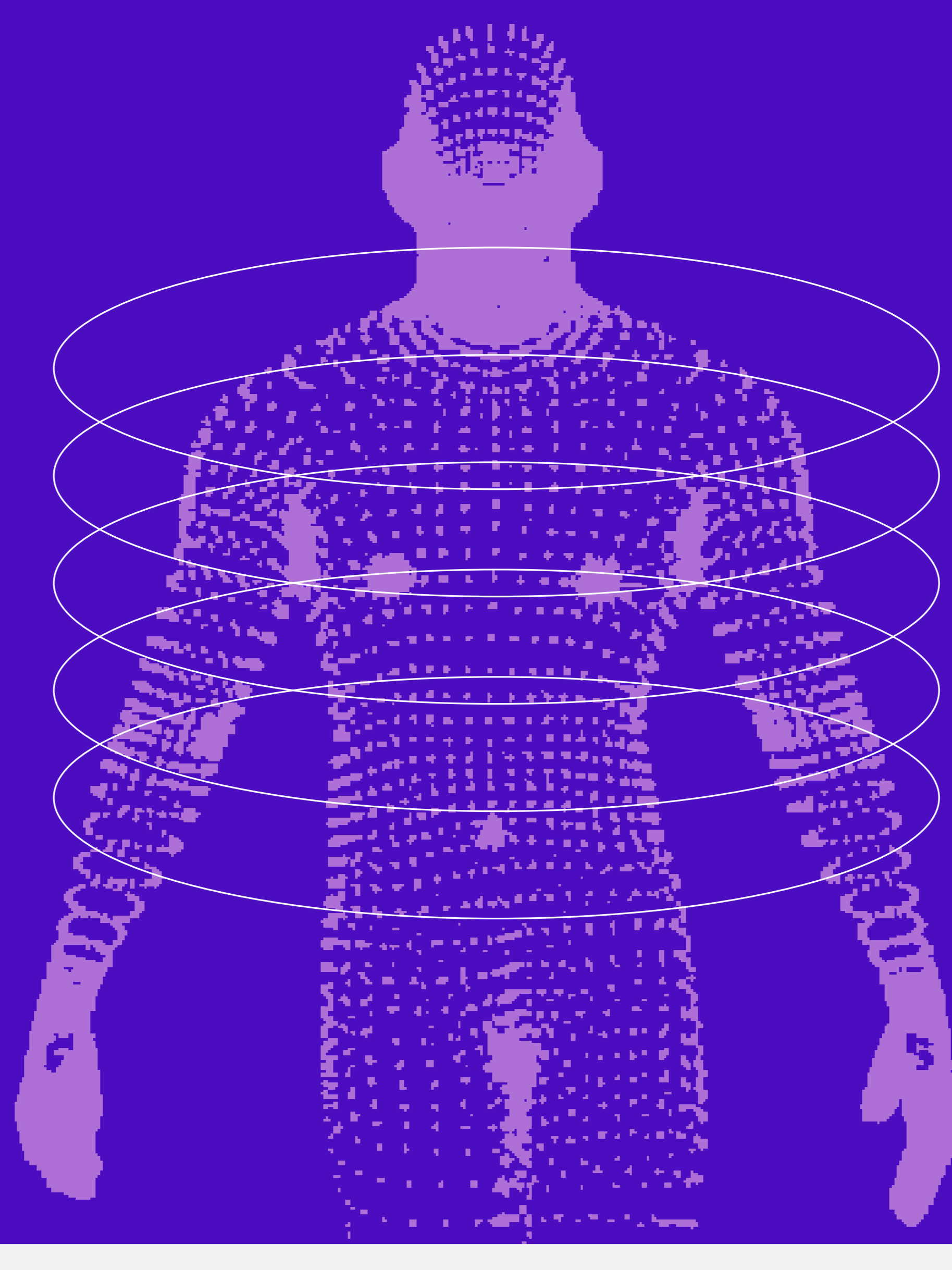


# What is CCG?



A Beginner's Guide to Craniocorpography (CCG)

## Understanding CCG



CCG (Craniocorpography) is a clinical method to assess balance & posture.

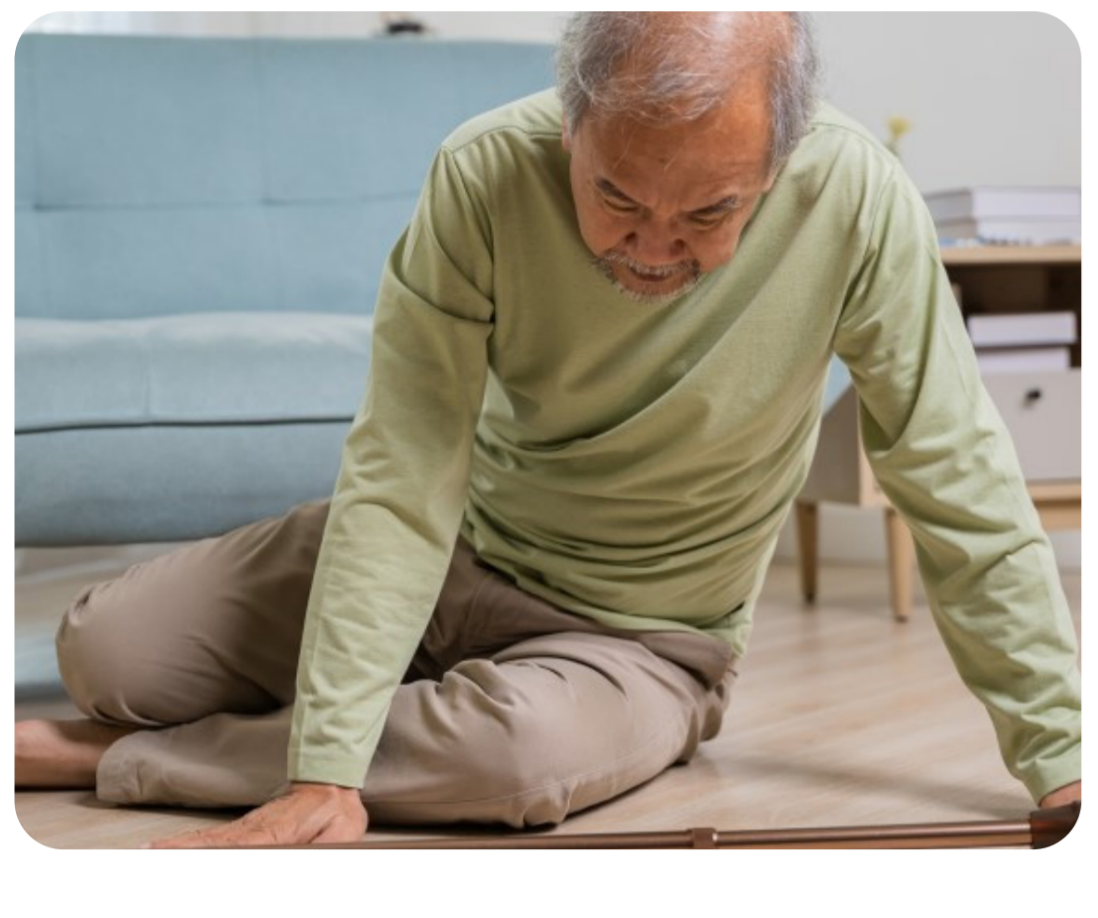
It visualizes head and body movements during standardized tests.



Crucial for identifying vestibular system issues in the inner ear.

Helps diagnose dizziness, vertigo, gait instability, and postural imbalance.

## Who Benefits from CCG?



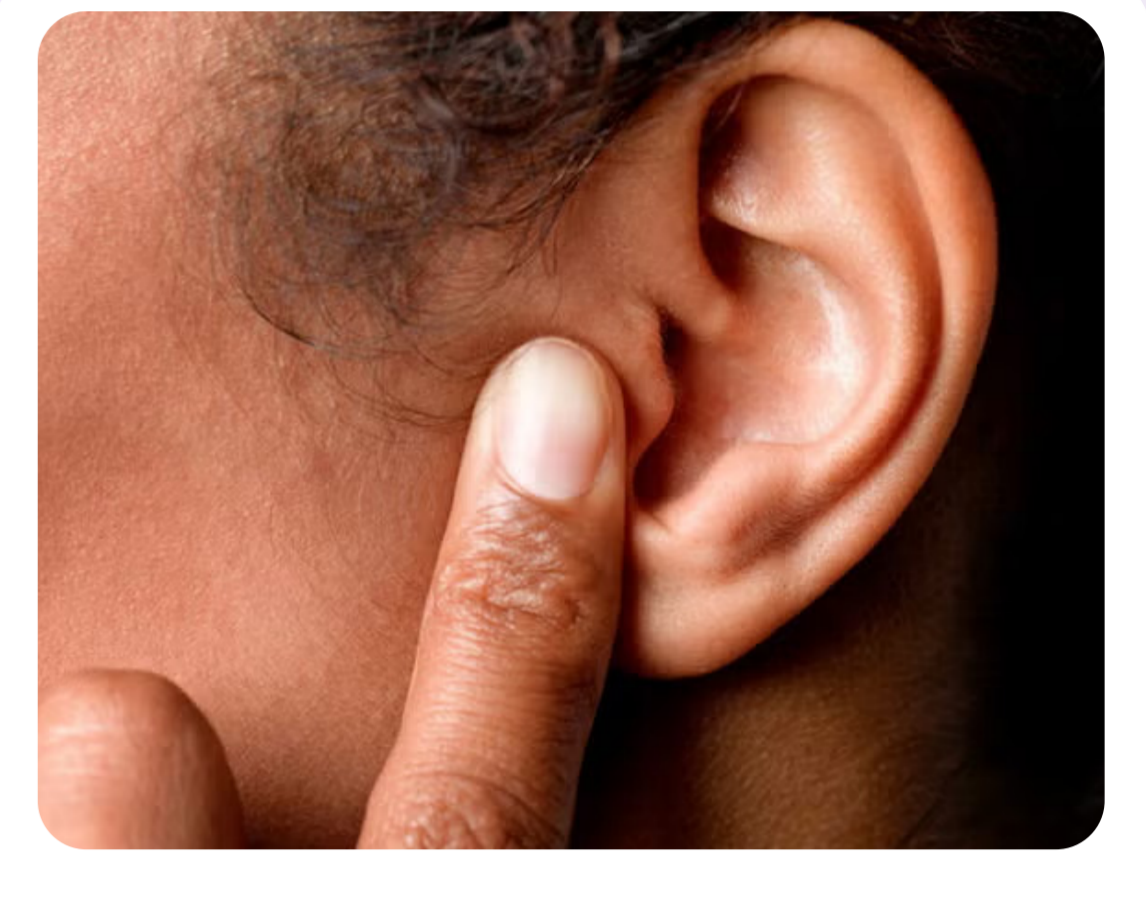
Elderly patients prone to falls or imbalance.



Individuals with dizziness or unsteadiness.



Patients with neurological disorders (e.g., Parkinson's, stroke recovery).



Those with vestibular dysfunction or inner ear conditions.

## Global Impact of Balance Disorders



# 30%

of adults over 65 experience balance disorders yearly.

(CDC, 2020)

# Falls

are a leading cause of injury-related deaths in seniors.

(WHO, 2021)

## Traditional Balance Tests (Limitations)



Romberg Test

Manual measurements prone to error



Unterberger-Fukuda Test

Often need dark rooms



Tandem Walking Test

Limited precision & reproducibility

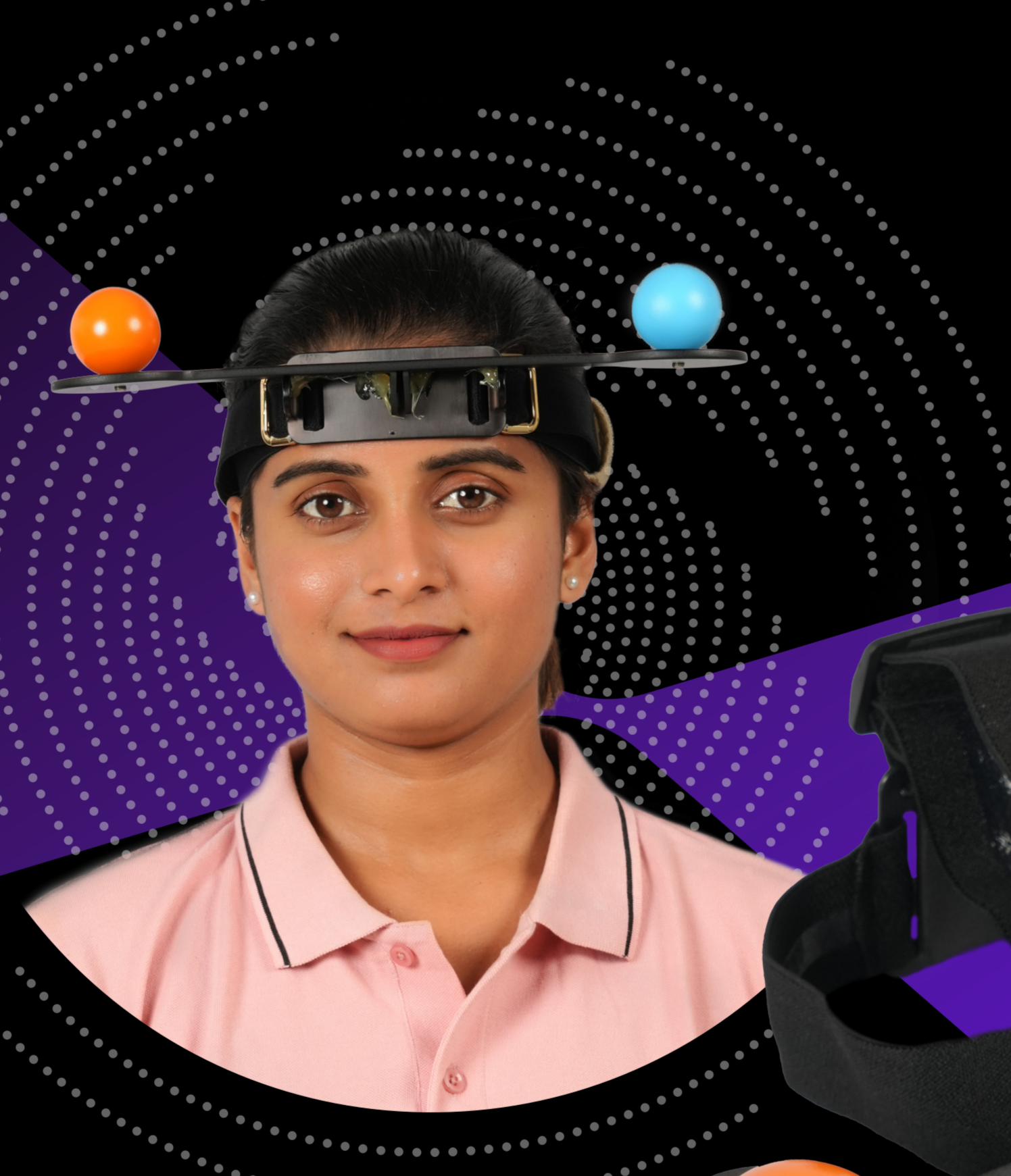
Meet EquiCCG by

TAEVAS  
Life Sciences

x equidor  
medtech



Next-gen Craniocorpography powered by Computer Vision



01

Works in well-lit environments (no dark room needed)

02

Automated real-time calculations:

Forward & Lateral Displacement.

Body Axis Spin & Angular Displacement.

Lateral & Anteroposterior Sway.

03

Supports Romberg, Tandem Walking & Unterberger-Fukuda Tests.

04

Uses wide-angle ceiling camera + electronics-free head tracker.

05

Immediate results:  
Normal | Borderline | Out-of-Normative Range

## Why EquiCCG?



Smarter diagnostics with visual, objective data



Effortless setup for ENT, Neurology & Balance Clinics



Enhances patient communication & adherence

Learn more at

[taevalifesciences.com](https://taevalifesciences.com)